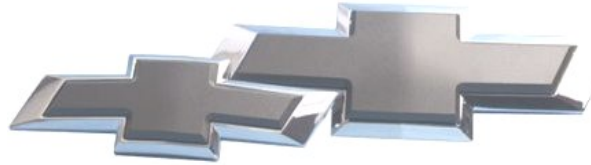


The Official Newsletter of  
The Piedmont Classic Chevy Club

*THE BOWTIE BULLETIN*

March 2013



*This Month's Contents*

Notes from the President  
Club Info and News  
Local Carshows & Cruises  
Feature Articles  
PCCC Parts & Swap  
Out & About Photos



Tom & Kate Doherty's 71 Corvette

*A Word from the Prez*

Well it seems that the year has begun on a good note, Grill 57 had a great PCCC turnout with 21 cars and a final tally of 260 cars in all even though it was a week later than normal.

Marshall's display in Dorton Arena was again a big hit with 24 club cars and 73 total at the International Auto Expo. It snowed on Saturday but it did not keep the people away. Thank You Marshall for a great event.

Ray and myself went to check out the Cars & Coffee in Fayetteville which was not even close to the one in Cary. There were 4 classics (2 Monte's a 71 Yenko Nova and a 71 Maverick Grabber) the rest were New Mustangs and Challengers with a few Honda's and Mitsubishi's thrown in. Not one Camaro. A total of about 20 cars.

We have secured our spaces for the club display. This year it is only being held in the Jim Graham building so our space will be A 15 & A 16. They are both 10 x 20 for a total space of 20 x 40.

David Ward Jones has agreed to let us use his car stanchions for the display this year. Thank you David.

Well I hope everyone is healthy and well and looking forward to our next meeting. *Dave Smith*

*Next Scheduled Meeting - Monday March 25, 2013*

**CLUB INFO • NEWS • SOCIAL EVENTS**

***PCCC Apparel***

**Royal Blue Polyester Golf Shirts**

(including standard embroidery) **[\$25]**

**Royal Blue Cotton Golf Shirts**

(including standard embroidery) **[\$20]**

Add **[\$2]** for 2XL and **[\$3]** for 3XL

**Club Jacket Black or Royal Blue/Navy**

(including standard embroidery) **[\$44]**

Add **[\$3]** for 2XL and **[\$4]** for 3XL

\$5 extra for embroidered name on shirt or jacket

**\$10** for embroidered club logo on back

**Magnetic Engraved Name Badges **[\$7.50]****

Contact **Barry Kitchener @ 919.833.0882**  
or **barrykit2000@yahoo.com**  
for complete ordering details

***2013 -2014 Club Officers***

President - David Smith

[dmsmith@nc.rr.com](mailto:dmsmith@nc.rr.com)

Vice President - Barry Kitchener

[barrykit2000@yahoo.com](mailto:barrykit2000@yahoo.com)

Secretaries - Jim Toups & Carol Keith

[jtoups@nc.rr.com](mailto:jtoups@nc.rr.com)

[tedkeith@bellsouth.net](mailto:tedkeith@bellsouth.net)

Treasurer - Tom Doherty

[tdoherty@mpcllp.com](mailto:tdoherty@mpcllp.com)

***It's Time To Pay Your 2013 Club Dues***  
***Send your payment to:***

***Tom Doherty***

***4008 Ridgebrook Bluffs***

***Raleigh, NC 27603***

***Scheduled PCCC Social Events***

***Stay tuned for upcoming events in 2013***

**Any Questions or Suggestions?**

Contact **David Ward Jones** at 919.971.4615 or [daviddwjarchitect@nc.rr.com](mailto:daviddwjarchitect@nc.rr.com)

***Know Your Plates?***



**Jim & Pat Beedenbender's 56 Chevrolet**

## CARSHOWS & CRUISES

March 14 - 16 - *25th Annual 'Run To The Sun' Carshow* - Myrtle Beach

March 24 - *Char-Grill Cruise In* - Benson - **1PM-6PM**

April 6 - *Classic Car & Bike Cruise In* - (*Chili's @ White Oak Mall*) - Garner - **1PM-4PM**

1st Fri - *Southern Roast Coffee Shoppe Cruise-In* - Holly Springs - **6PM-9PM**

1st Sat - *Zaxby's Cruise In* - US 70 E, Clayton - **3PM-9PM**

1st Sat - *Cars & Coffee at Waverly Place* - Cary **8AM-1130AM**

2nd Sat - *Char-Grill* - Atlantic Ave, Raleigh - **2PM-9PM**

3rd Sat - *Grill 57* - US 401 S, Raleigh - **2PM-9PM**

3rd Sat - *Goldston Cruise In* - Goldston - **4PM-Until**

4th Sat - *Sonic Drive In* - NC 96 - Zebulon - **3PM-9PM**

3rd Fri - *Andy's Creedmoor/Butner Cruise In* - NC 56 W (at Food Lion Parking Lot) Creedmoor - **4PM -Until**

4th Fri - *Chick-Fil-A / Goodberry's Cruise In* - Roxboro Rd, Durham - **4PM-9PM**

4th Sun - *Chevy's Ale House* NC 55 & US 1 - Apex - **3PM-8PM**

FOR A COMPLETE LIST OF UPCOMING EVENTS AND LINKS  
VISIT OUR NEW PCCC FACEBOOK GROUP PAGE AT

<https://www.facebook.com/groups/pcc.club/>

WHILE THE PCCC WEBSITE IS STILL ACTIVE, YOU CAN ALSO VIEW THE SAME AT

[www.piedmontccc.com](http://www.piedmontccc.com)

or contact David Matthews @ [dmhotrod089@gmail.com](mailto:dmhotrod089@gmail.com)

## Don Cooper's Trophy Showcase



The PCCC presents our  
donation to the Hilltop Home  
in Raleigh



Hilltop Home - Supporting and  
enriching the lives of children and  
their families.



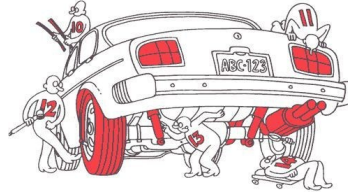
## David Smith's *TECHNICAL TIDBITS*

Many of us take for granted that our cars will start for us in the morning and get us to where we need to go. Without regular car maintenance, however, not surprisingly results from 722 cars tested showed an 80% failure rate for at least one part or system. That's 8 out of 10 cars failing at least one portion of a car inspection! What Components Failed Car Inspections?

Statistics from the inspections show the need to educate consumers on the importance of car maintenance and repair. What follows is a sampling of the percentage of cars failing each part of the inspection process.

Lubricants and Fluids - Based on the study, here are the failure percentages for auto lubricants and fluids:

*Engine Oil - 32%*  
*Washer Fluid - 23%*  
*Coolant (Flush) - 21%*  
*Transmission Fluid - 17%*  
*Power Steering Fluid - 15%*  
*Brake Fluid - 14%*



One way to troubleshoot leaks that you may find on your driveway or garage floor that could be causing problems with your car's lubricants and fluid levels is to look at the color. If you find discharge, check the color against the following guidelines to determine where your car may have a problem.

**Bright Green Fluid:** Radiator coolant (can also be orange, purple or red on later model cars). This may be leaking from the radiator, from overflow tank or from one of the many hoses on your car. Coolant normally has a sickeningly sweet smell, especially when hot, and will leave a crusty trail as it dries, helping you to find the original leak point.

**Light or Dark Brown Fluid:** Engine oil. This could be leaking from an improperly sealed or tightened oil filter, the oil pan, the valve cover or any number of oil seals on the engine. Oil will have a burnt smell.

**Bright Blue Fluid:** Windshield washer fluid. There is usually little or no odor since it is mainly water.

**Light Brown Fluid:** If there is also a strong odor of rotten eggs, this is gear lube or what is referred to as 90 weight oil due to its thickness. It may be leaking from the rear differential or the manual transmission front or rear seals.

**Red Fluid:** Automatic transmission or power steering fluid. Normally, this has very little odor unless burned but check for drips from the power steering pump, steering gear, hydraulic hoses from the reservoir to the pump, or from the front or rear seals on an automatic transmission.

**Light Yellow or Dark Muddy Brown Fluid:** Brake fluid, It's clear to light yellow when new but as it absorbs water, the fluid becomes a dark, muddy brown. Brake fluid leaks can be from the reservoir, or any of the metal or rubber lines between master cylinder and the wheel cylinders or calipers. Brake fluid is extremely corrosive and must be cleaned off paint or rubber immediately to avoid damage.

**Windshield Wipers -** Based on the study, 15% of front windshield wipers and 10% of rear wipers failed. Wiper blades should be checked periodically and replaced every six months.

Because lighting directly affects your safety and that of the cars around you, it's surprising to see the following failure rates in various lighting categories:

*License Plate Lights - 10%*  
*Brake Lights - 9%*  
*Backup Lights - 3%*  
*Side Marker Lights - 3%*  
*Turn Signal Lights - 3%*  
*Parking Lights/Tail Lights - 3%*  
*Dash Indicator Lights - 2%*



**Automotive lighting** is a way of communicating among drivers and it's vital to any car. Lights are also a key safety feature for road visibility - not just helping you see the road better, but for others to see you too.

## David Smith's TECHNICAL TIDBITS



Engine & Safety-Related Parts - Falling into the failure category of parts that could cause engine reliability or safety problems are the following:

*Air Filter - 18%*  
*Belts - 18%*  
*PCV Filter - 7%*  
*Hoses - 7%*  
*Radiator Cooling Fan (s) - 2%*  
*Horn - 2%*

A clogged or dirty air filter not only affects your car's performance (robbing you of power), it also affects your gas mileage. You should consider replacement around every 15,000 miles or once a year, depending on your local driving conditions.

Drive belts stretch, crack and harden over time, which can lead to slipping or breaking, leaving you stranded. With v-belts you must move a pulley or accessory to manually tighten the belts. Loose or slipping belts will squeal, especially when cold.

Most cars still have a PCV valve, it should be replaced every 15,000 miles.

Your car has numerous hoses to check within the engine compartment, from the cooling system to the air intake system as well as the fuel system. Rubber hoses will get brittle with age and heat. You can check hoses for flexibility by squeezing them (do so when cold; do not touch hot coolant hoses) and checking them for signs of cracking or splitting.

It also a good practice to replace all the coolant hoses including heater hoses every 3 or 4 years. Cracked or loose vacuum hoses can cause engine hesitation or inconsistent operation resulting in poor mileage. Check these periodically for cracks, splitting, or loose hose clamps.

Your radiator cooling fan is designed to move air through the radiator when the car is at slower speeds or stopped. The air flow removes heat created by the engine from the coolant using the radiator as a conductor. Also check the clutch fan if you have one.

Checking the horn is obviously quite simple - just press on the steering wheel horn pad or buttons. Due to the location of most horns in the front fender or radiator support areas, the wire connections can become damaged or disconnected due to road debris. Most horns have a dedicated fuse because it is a "hot" system that doesn't require the key in the ignition. If the horn doesn't work, first check the fuse box under the dashboard or inside the engine compartment. Then check the horns for loose or damaged wiring and repair or replace as needed.

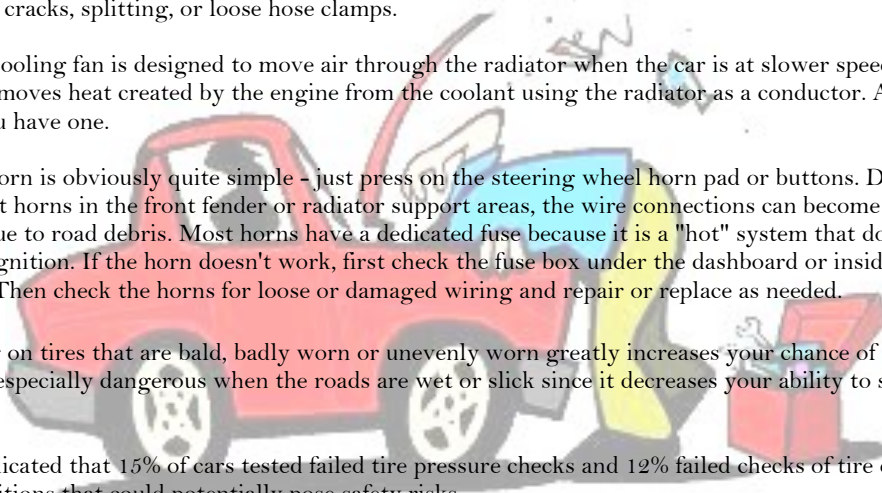
Tires - Driving on tires that are bald, badly worn or unevenly worn greatly increases your chance of getting a flat or a blowout. It's especially dangerous when the roads are wet or slick since it decreases your ability to stop or control your car.

Yet, testing indicated that 15% of cars tested failed tire pressure checks and 12% failed checks of tire depth - both of which are conditions that could potentially pose safety risks.

It's important that you check the air pressure in your tires on a regular basis, at least once a month, since that's all it takes for the air pressure to change within the tire. Always check your tires cold before driving to obtain the most accurate reading. And, of course, make sure you know the proper air pressure for your tires - check your owner's manual or the sticker on the driver's door post.

Worn out tread or bald tires cause safety issues since traction is reduced, decreasing your ability to control and stop your car. It's recommended that the tread depth of your tires be at least  $2/32$ ", but most experts recommend having no less than  $4/32$ ". Even at this depth, you should consider replacing your tires.

*This article was in part from a book I read by Car Care Unlimited, Thanks Chuck.  
Well until next time...Keep the shiny side up and the greasy side down.*

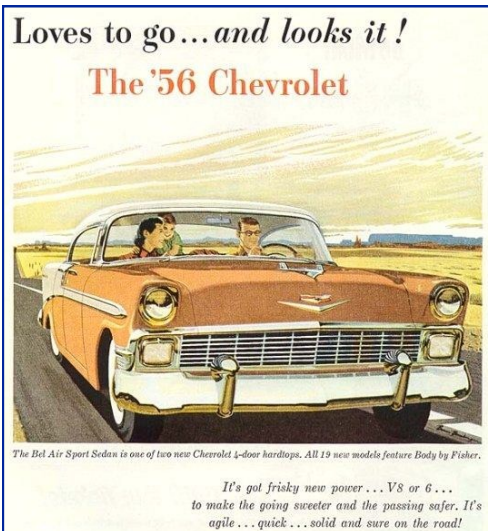


## FEATURE ARTICLE

### Historical Chevrolet Tidbits (1956 Chevrolet) – Submitted By Jeff Hopp

The 1956 Bel Air received a face-lift with a more conventional full-width grille, pleasing those customers who didn't favor the Ferrari-inspired '55 front end. Distinctive two-tone bodyside treatments and graceful front and rear wheel openings completed the "speedline" restyling. Single housings incorporated the taillight, stoplight, and backup light, and the left one held the gas filler - an idea popularized on Cadillacs.

Among the seven Bel Air models was a new Sport Sedan, a pillarless four-door hardtop that looked handsome with all the windows rolled down and allowed easy entry into the back seat. Production exceeded 103,000, compared to 128,000 two-door hardtops. Shapely two-door Nomad wagons topped the price chart at \$2,608, but now carried the same interior and rear-wheel sheet metal as other Bel Airs, lacking the original's unique trim. Only 7,886 were built. The least costly Bel Air, at \$2,025, was the two-door sedan. Seatbelts, shoulder harnesses, and a padded dashboard were available, and full-size cars could even get the hot Corvette 225-horsepower engine. In 1956 sales material there was an optional rain-sensing automatic top, which was first seen on the 1951 Buick LaSabre concept car. However, it is believed that it was never installed on a car. Popular Mechanics reported only 7.4% of owners in their survey ordered seat belts.



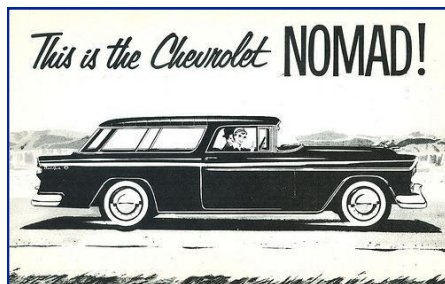
In 1956 General Motors offered over 50 accessories on their 1956 Chevrolet. Seatbelts were offered for the first and were a bargain at just \$10.95. Add a shoulder harness for only \$9.95 as Chevrolet was pushing safety. The list of accessories also included a Cadillac style automatic head lamp dimmer for \$44.25 and a remote control door mirror for \$6.95.

Power windows and power front seats were up \$10.00 each to \$155.00. But power steering still cost \$92.00 and power brakes were a bargain at \$38.00. Among low cost accessories were trunk and under hood lamps at \$1.95 each, a visor vanity mirror cost \$1.60 and a non-glare rearview mirror was only \$4.50. Choose a foot operated windshield washer for \$6.75 or you could add a automatic windshield washer for \$9.95.

Probably the most unusual new accessory offered on the 1956 Chevy has to be the automatic top raiser on the Belair Convertible. Two others were the front fender top molding and the Kool Kooshions. One item that was an option on the 1955

Chevrolet, an oil filter element, was now standard on most engines.

There were 8,103 Nomads produced in 1956. Chevrolet standardized most features in 1956. Two special features for the Nomad were the dogleg on the quarter panel and the chrome "V" under the tail lights for eight cylinder cars.



"This feature for this and future newsletters has excerpts taken from a book called Chevrolet Chronicle and the Internet. It is solely meant for the enjoyment of PCCC members to share some history of the Chevrolet."



## PCCC PARTS SWAP

Long Style Cast Iron Water Pump (for small block) [\$25]; HEI Distributor [\$75]; Carter Fuel Pump [\$15]; Cast Water Neck [\$15]; Chrome Water Neck [\$10]; 1970-72 Chevelle Original Dash Pad [\$75]; 1970 Chevelle tail light lenses [\$40 for both]; "350" emblems (R&L) for 70 Chevelle [\$40]; Trunk Emblem for 70 Chevelle [\$30]; Grill Emblem for 70 Chevelle [\$15]; Rocker Panel Trim for 1970-72 Chevelle [\$100 for pair]; Craftsman Compressor (needs some maint) [\$25]; Shop Vac [\$20]; K&N 13x2 Washable Air Filter [\$10]; 14x3 Air Filter [\$5]; 68-72 Chevelle Fuel Tank Door/License Plate Mount [\$10]; NEW Low-high pitch horn set w/ mounting kit [\$50]; Set of Chrome Lug Nuts/Washers for Cragar (7/16x20) [\$25]; Set of [4] Lug Nut Locks with key [\$10]

[Jeff Hopp](#) @ 919-467-9594

1972 Monte Carlo Custom (replaced the SS model in 72) 402 cu TH400 power windows, Power door locks, Power trunk, A/C, Tilt, Gauges, Bucket seats, floor shift, Compass, AM/FM stereo, rear defogger. All factory options. 115000 miles, 90% original. [**Will take no less than \$17000.00**] [David Smith](#) @ 919-662-8587

Small Block Quadrajets manifold [\$40]; Kenwood AM/FM Cass & CD Controller [\$100]; Kenwood 6 CD Changer [\$50]; 1970-1972 12 Bolt Posi Carrier [\$125]; Small Block Thumper Roller Cam [\$125]; Small Block Edelbrock Intake [\$75]; Small Block Chevy 383 Short Block (needs a piston replaced, cyl wall not scored) [\$400]; Edelbrock 750 Performer Carb - may need rebuild [\$85] [Ray Bader](#) @ 919-387-0479

Contact club members listed for more details . Also view our PCCC Facebook Page for more items.



### TRIVIA

The Chevrolet Monte Carlo's were produced from **1970-1988; 1995-2007**

How many 'Generation' of Corvettes were produced and which years were they featured?

Answer from the Feb 2013 Edition

Answer in the April 2013 Edition

### February Edition Trivia and Photo Winners

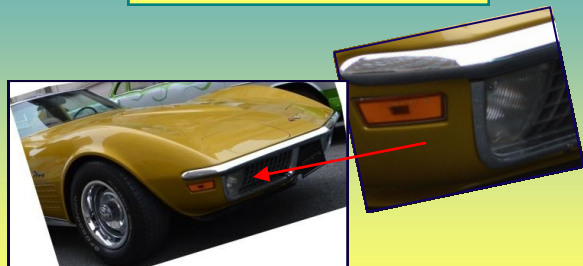
Ralph DeMichele , David Smith, Ray Bader

#### GUESS THE YEAR & MAKE



Send your answers to Jeff Hopp at [jhopp55@att.net](mailto:jhopp55@att.net)

#### FROM FEB 2013



Tom Doherty's Corvette

*OUT AND ABOUT WITH PCCC*



*Photos by Pat Smith & Jeff Hopp*