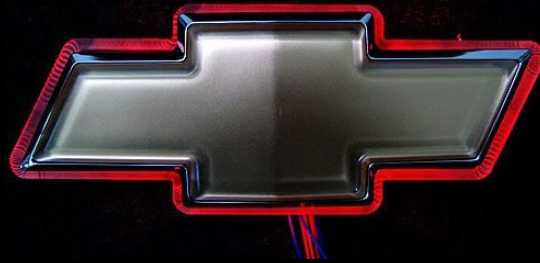


*The Bowtie Bulletin
Official Newsletter
Of The
Piedmont Classic Chevy Club*

February 2025 Edition



This Month's Contents

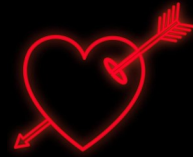
*Message from Our PCCC VP
Club Info, News and Social Events
Club Outings & Cruises
New Members
Member Birthdays
Feature Articles
PCCC Parts & Swap*



Alan DeCrane's 1967 Impala Convertible



A Special Message From John DeYoung



Hello, this is my first newsletter so I would like to say how grateful I am to be the Vice President of PCCC. Thank you to everyone who voted for me. As your Vice President, I look forward to assisting David Smith on the many tasks he has taken on as our President.

I visited Hilltop Home in December and encourage all members who have not had the opportunity to see how our donations are needed and put to use. Please try to make this a priority list in 2025 you will not regret it.

The winter is upon us so while our classics are resting we need to start planning for the spring. We have Good Guys in April, then our car show in May. Hope everyone is just as excited as I am to have a successful Car Show in May.

Let's have a great year!

John DeYoung, Vice President of Piedmont Classic Chevy Club

2025-2026 Club Officers

President - *David Smith*
dmsmith57@outlook.com

Vice President - *John DeYoung*
fuzzy59@nc.rr.com

Secretary - *Ron Fournier*
rbfournier@hotmail.com

Treasurer - *Tom Doherty*
tdoherty@mpcllp.com

CLUB INFO

Send your PCCC Dues payment to:

Tom Doherty
4008 Ridgebrook Bluffs;
Raleigh, NC 27603
Make check out to PCCC
Annual dues are \$40

PCCC Monthly Meetings are at **Carolina BBQ** located at **733 US-70 Garner 27529**. Meetings are going to be **every 4th Monday at 7PM** (530 PM if you plan to eat)

PCCC APPAREL

Contact *Larry Lewis* @ **919.215.3946** or **rclarry@aol.com** for complete ordering details and prices

Standard Club Shirt [\$10] Long Sleeve [\$15]

Polo Shirts [\$26]

Pink Ladies V-Neck [\$10]

Sport Tee's (Dri-Fit) Short Sleeve [\$14]; Long Sleeve [\$19]

Hats (All Styles) [\$18]

Ladies Jacket "Clique" (Blue Only) [\$56]

Ladies Jacket "Port Auth" (Blue or Black) [\$56]

Men's Jacket Traditional (Blue Only) [\$65]

Men's Jacket Hard Shell (Black Only) [\$70]

Magnetic Engraved Name Badges [\$12]



Standard Club T-Shirt with paid dues



Standard Name Badge



Pink Ladies V-Neck



Pink Ladies Name Badge

Who Does What In PCCC—2025

President

David Smith
919.518.3779
dmsmith57@outlook.com

Vice President

Club Correspondence

John DeYoung
919.274.7860
fuzzy59@nc.rr.com

Secretary

Ron Fournier
908.809.9781
rbfournier@hotmail.com

Treasurer

Member Directory

By-Laws Chairman

[Club Dues]

Tom Doherty
919.327.2365
tdoherty@mpcllp.com

Carshow Chairman

David Smith
919.518.3779
dmsmith57@outlook.com

Club Newsletter

Club Photography

Jeff Hopp
919.665.9318
jhopp55@att.net

Club Sponsorship Sales

Pat Smith
919.961.6233
psmith036@nc.rr.com

Club Apparel

Larry Lewis
919.215.3946
rclarry@aol.com

Parade Committee

TBD

New Member Welcome

Chairman

Dave Peedin
919.612.6998
funtrk@hotmail.com

New Member Packages

Dave Peedin
919.612-6998
funtrk@hotmail.com

Club Social Coordinators

Pat Smith

919.961.6233
psmith036@outlook.com

Cathy DeYoung

919.274.2191
cathydeyoung@nc.rr.com

Debbie Archambault

708.752.3627
lvwrgly@yahoo.com

Carshows and Cruise-In

Coordinator

David Matthews
919.381.0740
matthewsdavid1955@gmail.com

Club Historian

PCCC Webmaster

Les Shelton
919.912.1971
lpsiii1971@gmail.com

Facebook Administrators

Les Shelton
919.912.1971
lpsiii1971@gmail.com

Alan DeCrane
309.242.4156
bentone39@gmail.com

Club Email Distribution

Alan DeCrane
309.242.4156
bentone39@gmail.com

Good Guys Carshow

Coordinator

Dominick Caswell
919.271.3892
dominickcaswell@gmail.com

Club Travel Coordinator

Dave Peedin
919.612.6998
funtrk@hotmail.com

Wellness Committee

Dave Smith
919.518.3779
dmsmith57@outlook.com

Pat Smith
919.961.6233
psmith036@nc.rr.com

Debbie Archambault
708.752.3627
lvwrgly@yahoo.com

Ron & Eileen Fournier
908.809.9781
rbfournier1@hotmail.com



*CLUB CRUISES * OUTINGS * SOCIAL EVENTS*

Spring Cherokee Rod Run, the dates are Thursday 04/24/25 (travel day) Friday 25th & Saturday 26th (show dates) Sunday 27th (Return home)

Plenty of time but Cherokee Rodders have highly recommended our hotel twice on their website so the Great Smokies Inn will fill up quickly.

Get your reservations made early and be sure to tell Kristy, Mandy, Carson, or Amy you are with the Piedmont Classic Chevy Club for preferred rates.

Dave Peedin
919.612.6998

February Member Birthdays

- | | |
|-----------------------|--------------------------|
| <i>Beth Cooper</i> | <i>Ron Watkins</i> |
| <i>Casey Matthews</i> | <i>Floyd Barnes</i> |
| <i>Ken Hunter</i> | <i>Jo Lavergne Clark</i> |
| <i>Cyndi Torockio</i> | <i>Dave Neumann</i> |
| <i>Bruce Scamman</i> | <i>Roni Oeltjenbruns</i> |
| <i>Ron Schwitz</i> | |

Old Engine Names

Chrysler Industrial - Before Chrysler powered their cars with this engine, The Chrysler Industrial powered air raid sirens.

Oldsmobile Rocket - Some say this engine igniting the horsepower war of the 1950s and 1960s between GM and other automobile manufacturers.

Buick Fireball - Was a straight-eight cylinder automobile engine produced from 1931 to 1953 by the Buick division of General Motors.

Jeep Tornado - Jeep released their Tornado engine from 1960—1965, it was pulled from production after producing excessive oil leakage.

DeSoto Fire Dome - This was the first time that DeSoto offered an 8-cylinder engine in one of its models since 1931. By 1953, DeSoto's Firedome Hemi V-8 produced 170 horsepower.

Ford Cobra Jet - Rivalled the high-output blocks from Chrysler and General Motors. The Cobra Jet engine performance elevated the Mustangs of that era from Pony to Muscle car status.

Dodge Max Wedge - Formally the Maximum Performance Wedge, was an engine option produced by the Chrysler Corporation from 1962 to 1964, that was available exclusively in B Platform (intermediate) Dodges and Plymouths.

Plymouth Golden Commando - High-performance engine 350 V8 with two fb carburetors option for the Plymouth Fury in 1958.

Dodge Super Red Ram - Was a hemispherical combustion chamber engine with a variety of displacements and power outputs over the years. The original Red Ram engine was 241 cubic inches and produced 140 horsepower. It had red valve covers with the name "Red Ram" scripted into them.

Chevrolet Blue Flame - In 1937, GM released a new inline generation of six-cylinder engine. Blue Flame was an advertising term used by GM in the '30s and '40s to describe the efficiency of GM engines.

Mercury Merc-O-Matic - Was a transmission with a variety of features, including pushbutton controls and a steering column gear selector lever

Buick Dynaflo - Was the trademarked name for a type of automatic transmission developed and built by General Motors Buick Motor Division from late 1947 to mid-1963.

Tips for Installing Carpet in your Classic, By Dave Smith

When replacing the old carpet in your classic here are a few tips I have learned over the years.

You always want to mark where the carpet stops under the sill plates, when cutting the new carpet you know where to cut so it is not too long or too short. By doing the preceding you won't screw through the carpet and have the carpet unwind itself. After removing the old carpet and you finish cleaning and prepping the floor, sanding, painting, sound deadening material.



Clean all the seat bolts, seat belt bolts, nuts etc. Put them back in their proper place on the floor and screw them down about 1/3 of the way. When you install the carpet you will know exactly where every hole is and easily can cut an X pattern and push the carpet down to make the access hole.

Before installing the new carpet layout the carpet on a flat surface outside in direct sunlight if possible otherwise lay the carpet on a floor and push in at the indentations in the carpet. You will see the way the carpet will fit as soon as you lay it down. In the first scenario leave it in the sun for at least two hours, in the second scenario leave it lay for at least four hours. I did mine in January and left it in the guest bedroom overnight with the door closed.

When installing the carpet start with the rear section and settle it in place by pushing it down, when you are certain it is in place use weather strip or contact adhesive along the back portion of carpet and floor that goes under the rear seat. Let it set apart for a couple minutes then press together, I use something heavy on top to make sure of good contact.

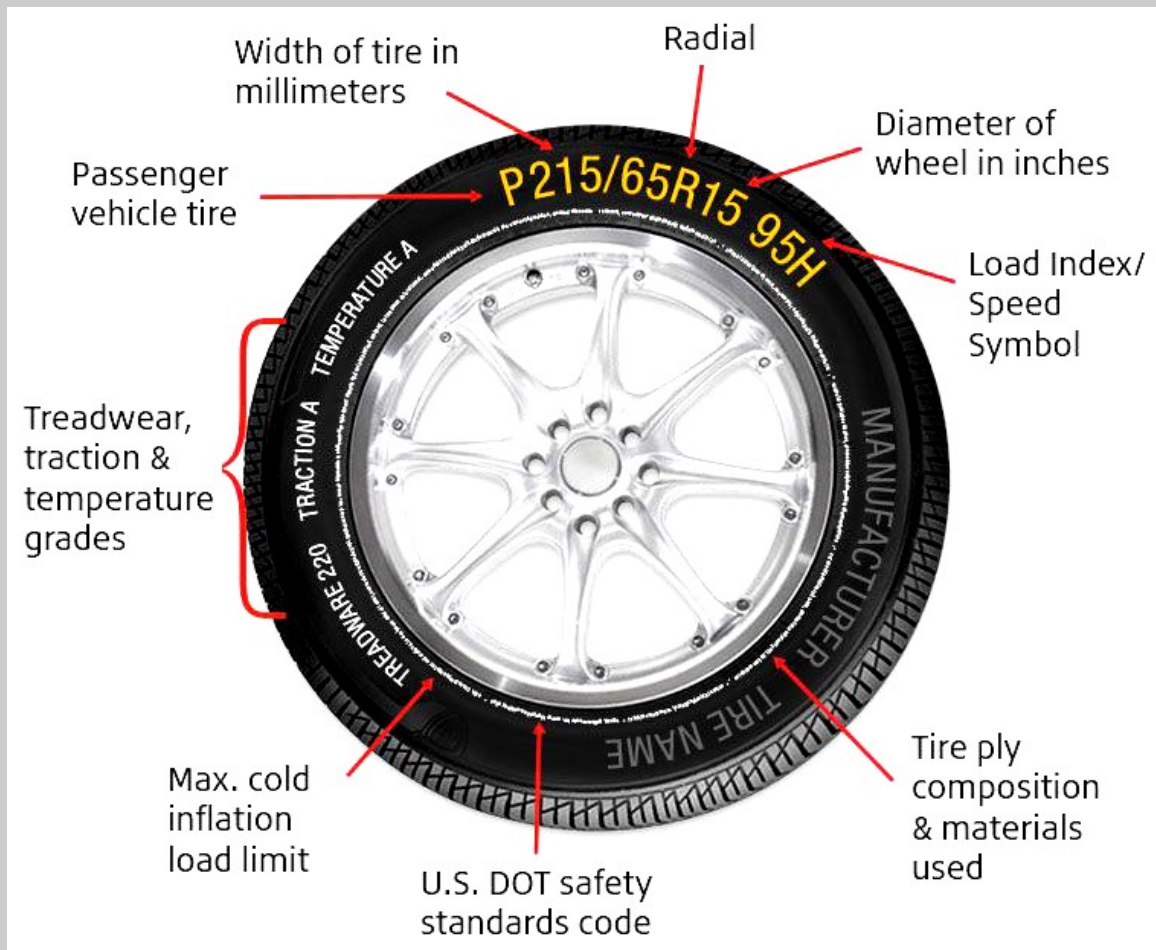
Now the fun part: remember those bolts you put back? Now is the time to make some holes. Start with the seat belt bolts and with a sharp razor knife or if you prefer a sharp blade hold the carpet around the bolt pressing down slightly and make an X on the top until you feel the bolt, take both hands and press on both sides until the bolt pops through. Cut around the bolt at the bottom and any extra carpet and jute will come off easy. Proceed to all the other bolts. The front seat bolts you will do after carpet is flat. Leave the bolts in place until carpet is completed,

Lay out the front carpet as you did the back piece, if you have a floor shift and/console, make sure to measure (from the old carpet if you still have it) the opening for console or floor shifter, if you do not have the old carpet remove new carpet and measure from the firewall pad to the end of the shifter. Then measure from the rear of the kick panel to the outside of the shifter. Then measure the carpet from the middle of the hump to the measurement you took in the last step and mark the carpet.

Reinstall the carpet and lay in as close to the final position as possible and visualize if your measurements for shifter are accurate leave room to push carpet all the way under firewall pad, Cut out floor shift and stretch carpet to fit. make bolt holes on front of both seats, trim sides of carpet. Use marks you made in beginning for sill plates.

Reinstall the seats, seat belts and console and you are done. Obviously if you do not have a floor shift then you can skip all the measuring and just lay the front carpet and trim.

What Do Those Tire Codes Mean?



P is for passenger vehicle tire. Typically rated for cars like sedans or coupes, crossovers, SUVs, minivans, and smaller trucks that don't commonly carry loads or drive on gravel roads. These tires are not meant for off-road use or driving on rough or rugged terrain.

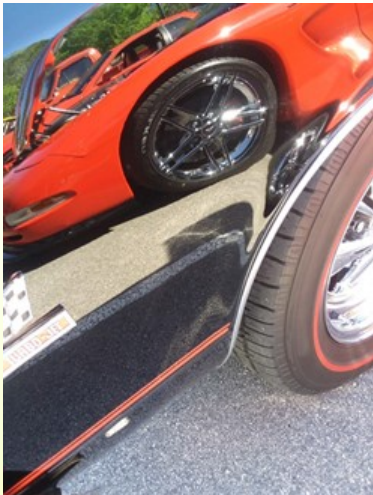
Tire width is represented by the three numbers following the tire type letter. The numbers are the width of the tire in millimeters measured from sidewall to sidewall.

The aspect ratio is a percentage that tells you the ratio of the tire's height to its width. Height is measured from the edge of the wheel rim to the top of the tread. The larger the number, the taller the tire's sidewall or profile. The aspect ratio number "65" means that the tire's height is 65 percent of its width.

R is for radial. 15 means the tire would fit a rim with a 15-inch diameter.

95 means the tire has a load capacity of 1,521 pounds. H means the tire can travel a maximum speed of 130 mph.

Photography By George Kavalak



*Photos By
George Kavalak*



Contact Jeff Hopp to submit an items for sale
(NO PHOTOS) or change or delete existing ads at
jhopp55@att.net Contact PCCC member for details

Stuff For Sale

5 keystone classic mags 4 mounted with tires
4yrs ago unilug [\$825]
Side panels for 57 Bel Air hardtop [\$375]
Dewalt combination sets new 18 volt in box
[\$210-225]
Contact [Jeff Grabowski](#) @ 281.814.8994

17x7 steel 6 lug wheels - OEM for 2007 - 2014
Silverado/Sierra/Tahoe Set of 4.
GM number AWUTX Steel wheels.
Will also fit 1999-2006 Pickups [\$60]
Contact [Pat Gaglione](#) @ 919.280.8350

Edelbrock AVS2 650 CFM Carburetor.
Driven less than 200 miles. [\$275]
Call [Ray Bader](#) @ 919-418-0977

1956 Oldsmobile 98, Canyon Green and Alcan
White, green interior, Chevy small block, auto
trans. New battery, starter, radiator, new front
brakes and more. Always gets attention. Have
service manual. Car in Fuquay Varina.
Asking [\$24500]
Contact [Julian Gandolfo](#) @ 954.520.0087

1st gen Camaro Parts; Cowl hood, trunk lid,
4 core radiator, S/B Trance, Cross member,
Sub frame, Sway bar, 4-8/15 Corvette BF
Goodrich P255/60 R15
Contact [Bob Simpson](#) @ 919.745.0996

Items for 1970 Chevelle

1970-72 Chevelle Original Dash Pad [\$75];
1970 Chevelle tail light lenses [\$40 for both];
68-72 Chevelle Fuel Tank Door/License Plate Mount [\$10];
Original 1970 Chevelle Grill with Stainless Trim [\$75];
"350" emblems (R&L) for 70 Chevelle [\$40];
Trunk Emblem for 70 Chevelle [\$30];
Grill Emblem for 70 Chevelle [\$15]
Contact [Jeff Hopp](#) @ 919-665-9318

Stuff For Sale

Contact Jeff Hopp to submit an items for sale
(NO PHOTOS) or change or delete existing ads at
jhopp55@att.net Contact PCCC member for details

1957 Chevrolet 210 4Dr—Restored with Bel-Air Trim

300 miles since restoration. Chevrolet Polar White; 350 engine rebuilt. Edelbrock Performer Intake with new Holly 600 Carb. Rebuilt Muncie 4-Speed; New Interior from CARS. New power steering and power front brakes. 1 wire alternator. Dual exhaust. Gauges & Tach.

Asking [\$13,000]

Contact [Denny Oestreich](#) @ 919.846.8163

14x 8 aluminum slot wheels with 3" backspacing. Unilug, will fit Mopar, Ford, Chevy. Lug nuts and spacers go with them, great condition. [\$100 for the pair]
Contact [Don Torockio](#) @ Home
919-557-0526
or Cell 412 445-0969

Fuel Tank for 1st Gen Camaro (painted black)
New sending unit already installed. [\$100]
Contact [Dave Peedin](#) @ 919.612.6998

350 turbo Hydramatic transmission great condition [\$300];
Set of Chevy Vortex SB heads, new valve job, w/ Howard springs [\$250]
Contact [Tim Howard](#) @ 919.880.6673

Complete 1957 Chevrolet rear end housing third member axles and brakes ready to install.

3:36 open, not Posi traction.

Casting #3276899 was used in '57 to '64 passenger cars without posi traction.
[\$550] delivered, [\$500] you pick up
Contact [Dan Glover](#) @ 919-656-0053

Brand new complete antenna assembly for a 1955 Chevrolet (still in the package)[\$80]
Contact [Tony Sica](#) @ 516.443.5479

(4) 14 inch original wheels and tires off of 1951 Chevy. [\$100]
Contact [Scott Rose](#) @ 919.768.2067

Original 1956 A arms and center shaft with all new bushings that have been professionally sandblasted and painted silver.
[\$125] for the set]
Contact [Rick Mangrum](#) @ 919.255.8663

Stock Hood for 1970 Camaro [\$50]
Contact [Dan Stalfire](#) @ 214.629.0980