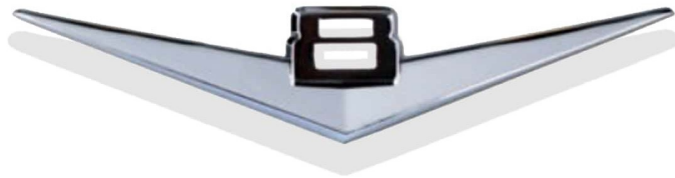


The Bowtie Bulletin
Official Newsletter Of
The Piedmont Classic Chevy Club

October 2025 Edition

This Month's Contents

Message from our PCCC President
Club Info, News and Social Events
Club Outings & Cruises
New Members
Member Birthdays
Feature Articles
PCCC Parts & Swap
Out & About Photography



Robert Clark's 1965 GTO



A Special Message From David Smith

October is almost here and with it brings a whole lot of changes. The trees start to lose their leaves, the temperature drops, days get shorter and Halloween sneaks up on us. Something else happens around October, more shows and cruises come with the cooler weather. Some last chances to take the old car out for the day.

Speaking of cruise and car shows, there is a rumor around us that October brings the sale of Mojos, Well that is somewhat true, Joe has sold the business to a managing partner. Now what does that mean? It simply means that Mojos stays Mojos, all the employees including Joe and Maria will still be there working less hours but keeping the business as is. What happens to the cruise ins and car shows? Nothing, they remain as it has been. The new partner is a car guy too. He has attended our car show and many cruises there. He wishes to remain anonymous for the time being. They are planning on opening other Mojos around Raleigh.

It is agreed in the sale that all shows and cruise-in's will continue as is. I hope everyone will continue to attend the cruise ins and car shows there. October 25 is the AACA car show at Mojos.

Also on that date is the trunk or treat in the adjacent parking lot by Burlington and Pet Smart from 10:00 till 12:00. If you don't want to do the show you can do the trunk or treat and then come over to the show. Drive safely and act safely.

RIP Chris Peedin, we will miss you greatly.

Thank you
David M Smith
President Piedmont Classic Chevy Club

A Special Message from David Peedin

To say that our family was overwhelmed would be an understatement. Grateful, humbled, and so thankful to have a family of car friends that are about as close as blood family would be more appropriate.

I just cannot thank each and every one of you more than you can ever know for coming out and being a part of her celebration. I don't have a confirmed total but according to the Funeral Director, there were well over 300 in attendance. ASTOUNDING !

It was very obvious how much our Chrissy was thought of and loved by all. The beautiful flowers, cards, donations, and memorial trees planted were so much appreciated. Even her family were amazed at the support shown by her Car Family.

Again, Thank you from the bottom of our hearts for sharing your thoughts, prayers and patience while standing in such a long line to speak with our families.

With sincere love and appreciation always.

Thank you, David.



2025-2026 Club Officers

President - **David Smith**
dmsmith57@outlook.com
Vice President - **John DeYoung**
fuzzy59@nc.rr.com

Secretary - **Ron Fournier**
rbfournier@hotmail.com

Treasurer - **Tom Doherty**
tdoherty@mpcllp.com

CLUB INFO



Send your PCCC Dues payment to:

Tom Doherty
4008 Ridgebrook Bluffs;
Raleigh, NC 27603
Make check out to PCCC
Annual dues are \$40

PCCC Monthly Meetings are at **Carolina BBQ** located at **733 US-70 Garner 27529**.
Meetings are going to be **every 4th Monday at 7PM** (530 PM if you plan to eat)

PCCC APPAREL

Contact **Larry Lewis @ 919.215.3946** or
rclarry@aol.com
for complete ordering details and prices

Standard Club Shirt [\$10] Long Sleeve [\$15]

Polo Shirts [\$26]

Pink Ladies V-Neck [\$18]

Sport Tee's (Dri-Fit) Short Sleeve [\$14]; Long Sleeve [\$19]

Hats (All Styles) [\$18]

Ladies Jacket "Clique" (Blue Only) [\$56]

Ladies Jacket "Port Auth" (Blue or Black) [\$56]

Men's Jacket Traditional (Blue Only) [\$65]

Men's Jacket Hard Shell (Black Only) [\$70]

Magnetic Engraved Name Badges [\$12]



Standard Club T-Shirt with paid dues



Standard Name Badge



Pink Ladies V-Neck



Pink Ladies Name Badge

WELCOME NEW MEMBERS

*Dennis & Julie Anne Pepper
Middlesex, NC*

*Bill & Roseann Bluler
Raleigh, NC*

*Thomas & Michelle Stacy
Raleigh, NC*

*Joe & Pam Smith
Fuquay-Varina, NC*

Hey Everyone, Much needed essentials are needed at Hilltop Home. They have setup a wish list through Amazon for things that are needed. Please take a minute to check it out. Go to hilltophome.org, click on **DONATIONS** and scroll down to **Amazon Wish List**.

There are many items that are inexpensive and are much needed.

Most items are less than a car part. Thanks for taking a minute to check this out!

Pat Smith



The New Member Photo Directory

The new photo directory will be emailed out to PCCC Membership periodically as new members join and new photos are submitted.

Tom Doherty will also continue to send out the Member Directory in Excel Format.

Submit any changes or edits for your info to Julian Gandolfo.

New photos for the directory can be sent to Julian Gandolfo or Jeff Hopp.

Julian's Email — jcg2684@gmail.com

Jeff's Email - jhopp55@att.net

Member Birthdays in October

*Barry Kitchener
Keith Archambault
Ted Korab
Betty Bagwell
Rob Andersen
Larry Lewis
Johnny Ellis*

*Gary Bryngelson
Alfredo Tognetti
Bill Schulte
Natalie Hummel
Lindsay Recchie
Connie Williams
Christina Marin*

PCCC Outings

Cruise to The Cherokee Fall Carshow—Oct 16-19

For traveling we will split up into smaller groups. The groups are yet to be determined. Pick a leader and where you want to meet. Final travel details will be communicated before the trip.

Call 828-497-2020 for any cancellations.

Thanks, Pat Smith

Stay Tuned for future details

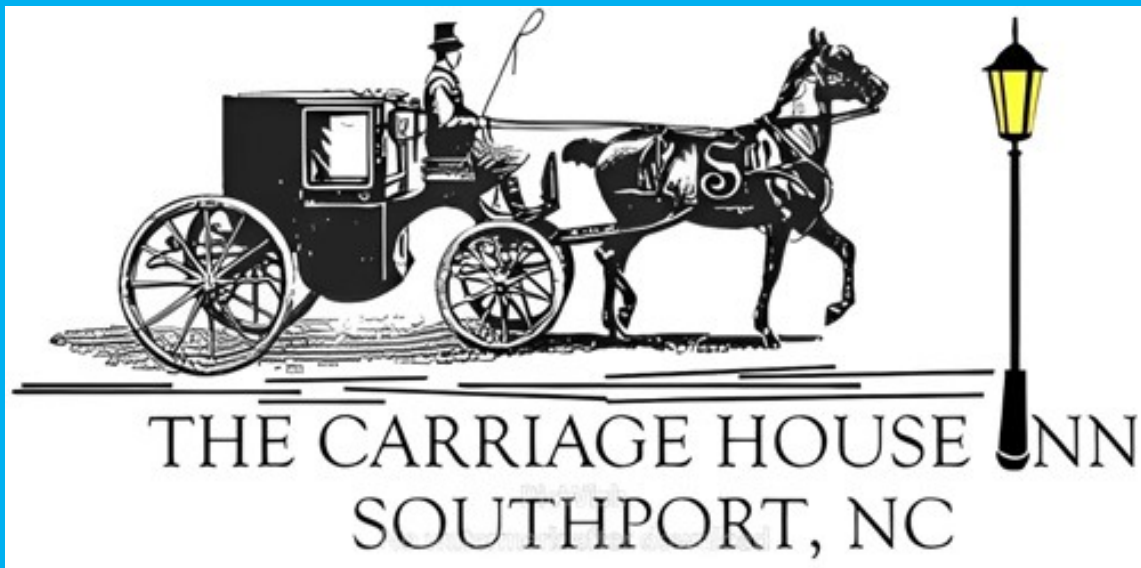


Mark your calendars, December 7, 2025 at 4:30 we will have our club Christmas Party. It will be at Carolina Barbecue, same as last year. More information will be coming soon. Always a good time, hope to see you there.

Your Social Committee,

Pat Smith, Cathy DeYoung and Debbie Archambault

A Special Offer from PCCC Members John and Amy Mann



We are offering a 25% discount for any car club members that want to stay at our Bed and Breakfast down in Southport, NC

Minimum of two nights (excluding holiday weekends), includes breakfast each day as well as happy hour in the evening one free drink, and a charcuterie board appetizer each day.

See our website at carriagehouseinnsouthport.com
or call at (910) 834-3224

Contact John Mann @ 919-757-5319

HISTORICAL CHEVROLET TIDBITS (Chevrolet Engines)

When Chevrolet began building vehicles, they were powered by a 299ci, six-cylinder engine. These automobiles could reach a top speed of 65 mph "without taxing themselves," and accelerated from zero to 50 in an "astounding" 15 seconds. By today's standards this isn't too impressive, but at the time Chevrolet was one of the fastest vehicles on the road.

In the early years, there was a great deal of research and development dedicated to coming up with a powerful engine that could be produced for a reasonable price. Chevy's first V-8 engine was released in 1917. The 90 degree overhead-valve design debuted in the D-series, the last of the original long-wheelbase cars. The eight cylinder lasted only two years, as Chevrolet dropped these "large" power plants to develop four-cylinder versions.

It would be 1929 before a six-cylinder reappeared, and a V-8 wouldn't be available again until the introduction of the legendary small-block in 1955, 36 years later. Until the mid-1970s, most General Motors brands designed and manufactured their own engines with few interchangeable parts between brands. In the mid-1960s, there were 8 separate families of GM V8 engines on sale in the USA.

By the 1970s, GM began to see problems with this approach. For instance, four different North American divisions (Chevrolet, Pontiac, Oldsmobile and Buick) offered four completely different versions of a 350 cu in V8 engine - very few parts would interchange between the four designs despite their visual similarities, resulting in confusion for owners who (quite naturally) assumed that replacement parts would be usable across the board. In addition to these issues and the obvious overlap in production costs, the cost of certifying so many different engines for tightening worldwide emissions regulations threatened to become very costly. By the early 1980s, GM had consolidated its powertrain engineering efforts into a few distinct lines.

Examples of Chevrolet Engines Through The Years

4 Cyl's Chevrolet Inline 4 [1913-1928]

Chevrolet Copper Cooled straight 4 [1923]

Chevrolet 153 Straight 4 (Derived from the Chevrolet Six) [1961-1970]

GM 2300 Aluminum Block Straight 4 (Built by Chevrolet) [1970-1977]

Isuzu G161 SOHC Straight 4 (Used in the Chevrolet Chevette) [1976-1986]

6Cyl's Chevrolet Stove Bolt Straight 6 [1928-1936]

Chevrolet Blue Flame Straight 6 (Also used in GMC Truck Models) [1936-1962]

Chevrolet Corvair Turbo Charged Flat 6 (marketed as "Turbo Air" ...It was the second production engine ever to be equipped from the factory with a turbocharger.) [1959-1969]

Chevrolet Generation 3 Straight 6 [1962-2001]

Chevrolet 90 degree V6 (derived from the Chevrolet Small Block V8. Now marketed as the GM Vortec V6) [1977-2013]

8 Cyl's Chevrolet Series D V8 (acquired as part of Chevrolet's and merger into GM) [1917-1918]

Chevrolet Small Block V8 (originally "Turbo-Fire", now referred to as "GM Generation I") [1954-2003]

Chevrolet W V8 (Also referred to as Turbo-Thrust) [1958-1965]

Chevrolet Big Block (originally Turbo Jet) [1965-2009]



Think your car may have an issue with its alignment?

Road Test Symptoms

If you think your car may have an alignment issue, it's likely because you noticed its drive feel and overall handling have changed. Driving on a flat surface when the road is dry with an alignment problem, you may notice:

The car pulls to one side or the other

A squealing noise when making slow turns. A steering wheel that's set off-center vibrating in the car or steering wheel uneven tire wear tire pressure. Because your car's alignment dictates the specific angles at which its wheels meet the road, uneven tire tread patterns are often seen in a vehicle with an alignment issue. For example, a worn or loose wheel bearings can cause a tire to lean in or out, evident in more wear to the inside or outside of the affected tires.

Keeping tires filled to their proper cold pressure levels and ensuring that the correct tire size and type is used for your vehicle will help your steer clear of alignment problems later on.

Know When to Get Your Alignment Checked

Although different manufacturers may call for alignment checks more or less often, it's important that owners have their car alignment checked by a trained technician at least once a year.

Many service centers evaluate the suspension and alignment when tires are rotated. Make sure that you have your alignment checked when you buy new tires so they don't wear unevenly from the start.

How Auto Technicians Assess Vehicle Alignment. A trained auto technician listens carefully to the customer's report of what they've seen and heard while in the driver's seat and from there uses a piece of machinery called a four-wheel alignment system to test the vehicle's current performance. A four-wheel alignment system is made up of a large platform rack and corresponding diagnostic equipment.

To test the vehicle's alignment, the vehicle is driven onto the alignment rack and secured to the platform. After conducting a visual inspection of the vehicle's tires, suspension, and steering components, it's time to drive the vehicle on the testing platform.

During its test run, the four-wheel alignment system records exact measurements of the angles of the wheels and tires and places them side by side with the manufacturer's recommendations for proper alignment. Based on this information, the technician moves forward by making adjustments one by one to realign the vehicle

Not many places have the specs for aligning our older cars, one place that I have used and I'm very pleased with is **Massey Alignment at 400 W. Noble St., Selma NC 27576; Phone 919-965-3787**

They are very knowledgeable on the aligning of our cars.

Contact Jeff Hopp to submit items for sale
(NO PHOTOS) or change or delete existing ads at
jhopp55@att.net
Contact PCCC member for details

Stuff For Sale

Classic 55-57 Chevrolet Used Parts

1957 a set of 4door hardtop doors stripped and metal patched \$100
55-57 2Door Hardtop glass w/frames all 4 pieces [\$50]
55-57 2 Door hardtop windshield [\$50]
56-57 4 Door Hardtop rear window [\$25]
55-57 Many pieces of stainless trim [\$10-\$30/piece]
Ask about other 55-57 parts

Contact [Denny Oestreich](#) @ 919.846.8163

New pair of rear brake wheel cylinders.
15/16" bore fits 73-77 Malibu and many other 70s GM cars (not station wagons) [\$20 for the pair]
Dynacorn battery tray for 68-72 Chevelle, also fits Monte Carlo. [FREE]
Contact [Pat Gaglione](#) @ 919-280-8350

1956 Oldsmobile 98, Canyon Green and Alcan White, green interior, Chevy small block, auto trans. New battery, starter, radiator, new front brakes and more. Always gets attention. Have service manual. Car in Fuquay Varina.
Asking [\$24500]
Contact [Julian Gandolfo](#) @ 954.520.0087

14x 8 aluminum slot wheels with 3" backspacing. Unilug, will fit Mopar, Ford, Chevy. Lug nuts and spacers go with them, great condition. [\$100 for the pair]
Contact [Don Torockio](#)
@ Home 919-557-0526
or Cell 412 445-0969

1st gen Camaro Parts; Cowl hood, trunk lid, 4 core radiator, S/B Trance, Cross member, Sub frame, Sway bar, 4-8/15 Corvette BF Goodrich P255/60 R15
Contact [Bob Simpson](#) @ 919.745.0996

Multiple GM distributors restored and tuned on a Sun Distributor machine. Aluminum and cast iron available, Ranging from \$165 to \$385 for a '62 corvette dual point. Others and HEI available upon request.
Contact [Jeff Stevens](#) by email at L78.bbc@gmail.com

Complete 1957 Chevrolet rear end housing third member axles and brakes ready to install. 3:36 open, not Posi traction. Casting #3276899 was used in '57 to '64 passenger cars without posi traction. [\$550] delivered, [\$500] you pick up.
[4] Cragar uni lug wheels for sale, 2 are 15 X 6, and 2 are 15 X 8. with all lug nuts. [\$500.00 for all]
Contact [Dan Glover](#) @ 919-656-0053

Stuff For Sale

Contact Jeff Hopp to submit items for sale
(NO PHOTOS) or change or delete existing ads at
jhopp55@att.net
Contact PCCC member for details

Accel "day 2" big block chevy yellow super stock universal spark plug wires. [\$40 new in box]

Edelbrock pro flow "fly eye" air filter assembly [\$25 new in box]

Spectre "Super Stock Day 2" dual snorkel air cleaner assembly. Comes with piping that mounts to front of grille. [\$100 new in box]

1968-1972 SS Chevelle tail pipes custom mandrel bent with correct OE chrome tips. [\$150 gently used.]

Contact [Eric Balachowski](mailto:Eric.Balachowski@919.637.6924) @ 919.637.6924

4 early ('68 or before) plain marked "Mustang" full 15-inch wheel covers.

[\$5 each or another fair offer]

Contact [Stan Williams](mailto:Stan.Williams@919.675.9489) @ 919.675.9489



Big Block Long Tube Headers

[\$75]

Contact [Ray Bader](mailto:Ray.Bader@919.418.0977) @

919.418.0977

2014-2015 GMC Sierra INTELLILINK IO6 Navigation Radio UPGRADE.

Originally \$900.00. [\$450.00]

Contact [Rob Andersen](mailto:Rob.Andersen@919.749.1454) @ 919.749.1454

Brand new complete antenna assembly for a 1955 Chevrolet (still in the package) [\$80]

Contact [Tony Sica](mailto:Tony.Sica@516.443.5479) @ 516.443.5479

350 turbo Hydramatic transmission great condition [\$300]; Set of Chevy Vortex SB heads, new valve job, w/ Howard springs [\$250]

Contact [Tim Howard](mailto:Tim.Howard@919.880.6673) @ 919.880.6673

Original 1956 A arms and center shaft with all new bushings that have been professionally sandblasted and painted silver. [\$125] for the set.

Over 50 items for 1970 Roadrunner, interior parts, bucket seats, dash and numerous other items.

1969 Camaro interior parts, new interior door panels, recovered bucket seats in gray suede.

Contact [Rick Mangrum](mailto:Rick.Mangrum@919.255.8663) @ 919.255.8663 for details and prices.

Items for 1970 Chevelle

1970-72 Chevelle Original Dash Pad [\$75];

1970 Chevelle tail light lenses [\$40 for both];

68-72 Chevelle Fuel Tank Door/License Plate Mount [\$10];

Original 1970 Chevelle Grill with Stainless Trim [\$75];

"350" emblems (R&L) for 70 Chevelle [\$40];

Trunk Emblem for 70 Chevelle [\$30];

Grill Emblem for 70 Chevelle [\$15]

Contact [Jeff Hopp](mailto:Jeff.Hopp@919.665.9318) @ 919-665-9318

PCCC at the Wake Forest Charity Car Show



Photos By, Debbie Archambault



Out & About
PCCC Photography

Photos by
Les Shelton
Hank Lane
Cathy DeYoung
Jeff Hopp
David Matthews
Elke Watkins





Out & About
PCCC Photography



Will the Real
David Matthews
please stand up?



Photos by
Jeff Hopp
Lee Caplan
Debbie Archambault
Chrissy Hunter
Les Shelton
Hank Lane

